

# Pleasant Valley Rancher

517 Doreen Place | \$444,900



A lovely Pleasant Valley rancher located upon a quiet no through road and only minutes from all the North Nanaimo amenities. This three bedroom rancher boasts a single car garage and a fully fenced yard with easy care landscaping. This well cared for home has gorgeous slate flooring through-out, a natural gas fireplace, thermal windows and a vaulted ceiling. The next lucky owner will also enjoy the open floor plan, two bay windows, a sunny dining area and a spacious kitchen with many cabinets and much counter space. The king-sized master bedroom provides private access onto a rear private deck overlooking the beautiful backyard. The master bedroom also benefits from a cheater door into the main bathroom with updated plumbing and lighting fixtures and a low-flush toilet. The two additional bedrooms are nearby. Hurry, this very affordable and clean home is ready for you. All data and measurements are approximate and should be verified.

Home: 1,086 Sq Ft | Bedrooms: 3 | Baths: 1 | Taxes: \$2,431 / year



Each office is independently owned & operated

OFFICE 250.751.1223

This is not intended to solicit properties already listed for sale.



Additional photos, virtual tours and more at

[www.chris-martin.ca](http://www.chris-martin.ca)

CELL 250.616.1996 | [chris@chris-martin.ca](mailto:chris@chris-martin.ca)

CHRIS MARTIN

PERSONAL REAL ESTATE CORPORATION

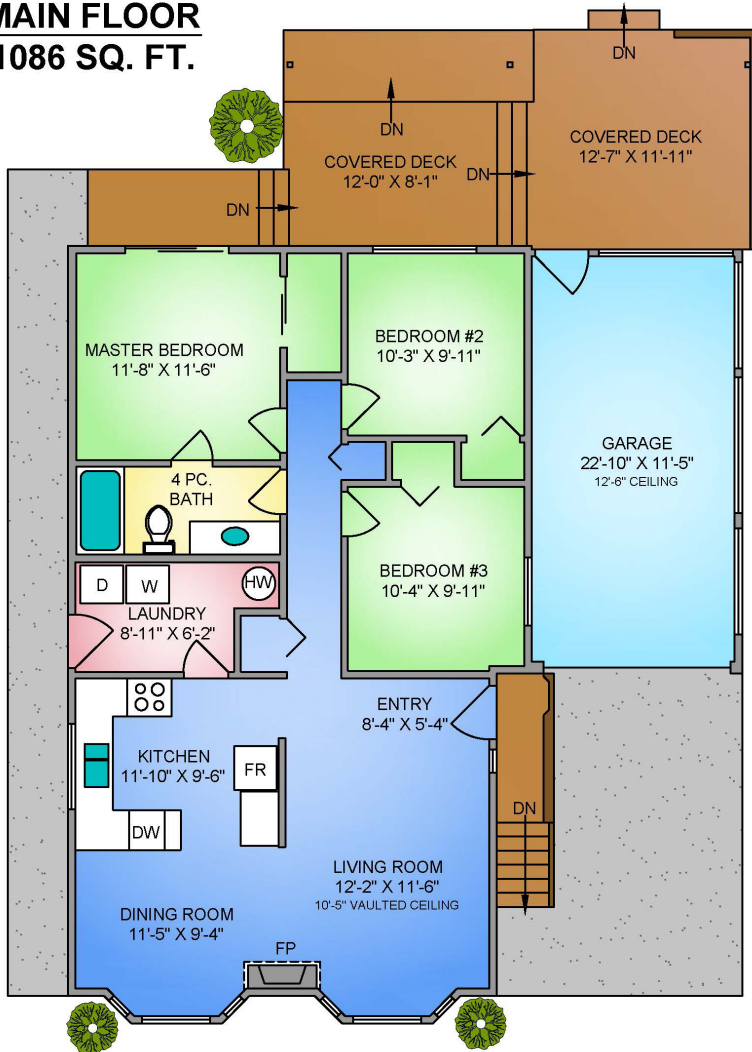
*A name to remember!*

# Floor Plans

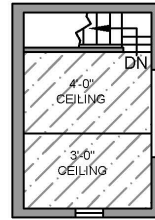
517 Doreen Place | \$444,900



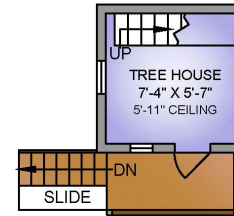
## MAIN FLOOR 1086 SQ. FT.



## TREE HOUSE UPPER 100 SQ. FT.



## TREE HOUSE MAIN 69 SQ. FT.



NORTH



0' 5' 10'

SCALE

517 DOREEN PLACE  
MAY 21, 2019

Prepared by PROPER MEASURE MID ISLAND for the exclusive use of CHRIS MARTIN  
Plans may not be 100% accurate. Buyer must verify any critical measurement.  
Private resale or modification of floor plans to a third party by any individual or entity other than Proper Measure Mid Island is strictly prohibited

FLOOR	AREA (SQ. FT.)			
	FINISHED	OTHER	GARAGE	DECK / PATIO
TOTAL	1086	-	283	367
TREE HOUSE	-	169	-	23


 250-616-2482  
 PROPER MEASURE™ MID ISLAND  
 propermeasure.com  
 midisland@propermeasure.com

[www.chris-martin.ca](http://www.chris-martin.ca)

CELL 250.616.1996 | [chris@chris-martin.ca](mailto:chris@chris-martin.ca)

  
 CHRIS MARTIN  
 PERSONAL REAL ESTATE CORPORATION

*A name to remember!*

  
 RE/MAX  
 of Nanaimo